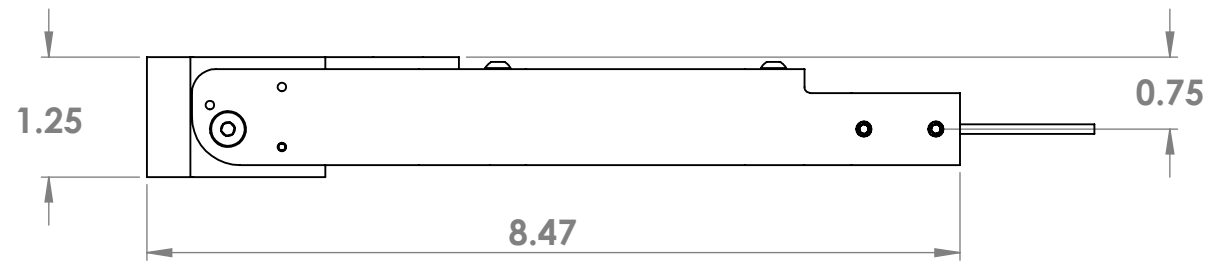


8 7 6 5 4 3 2 1

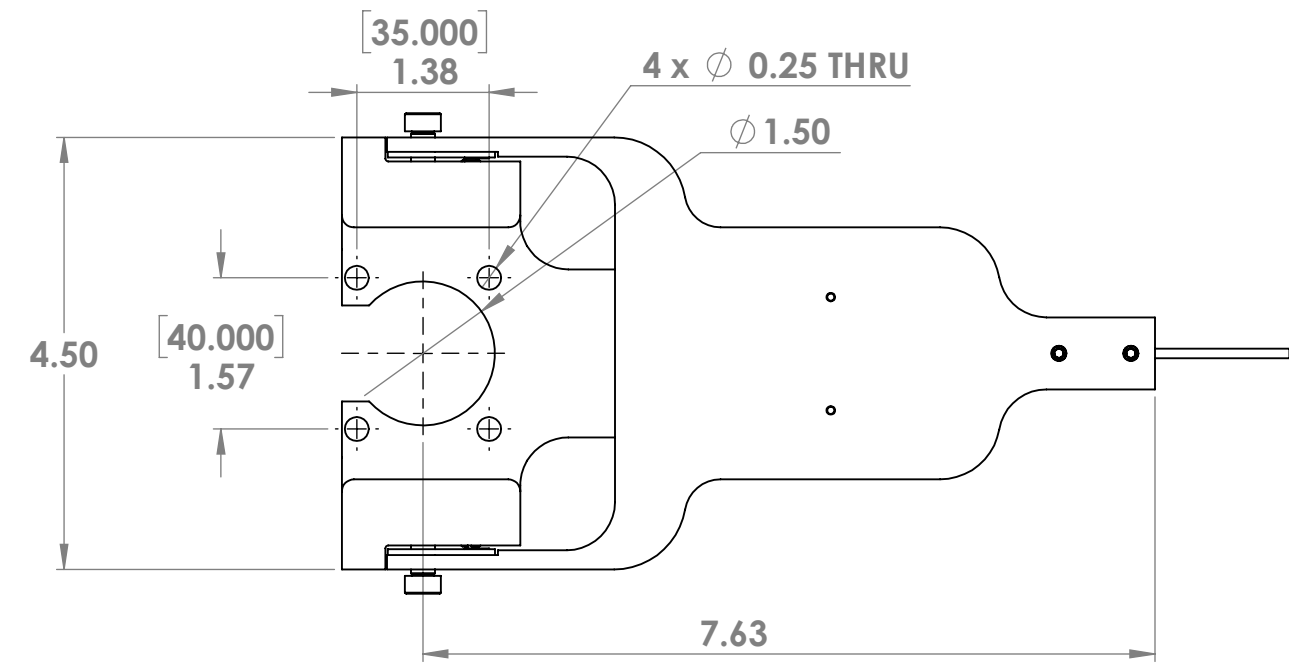
D

D



C

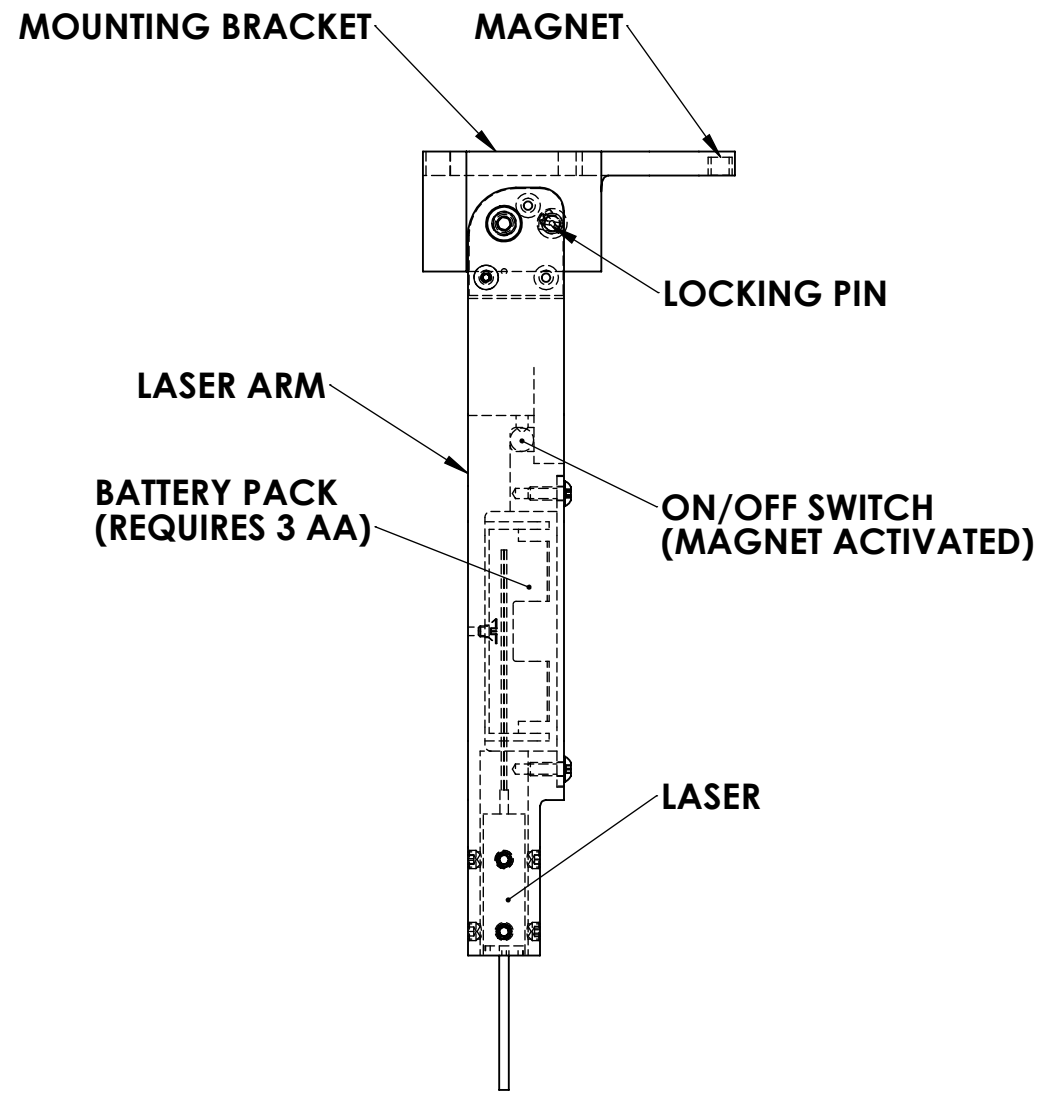
C



B

B


**OFF POSITION**



**ON POSITION**

A

A

UNLESS OTHERWISE SPECIFIED: DIMENSIONS ARE IN INCHES TOLERANCES: FRACTIONAL: ± 1/16 ANGULAR: ± 2 Degrees TWO PLACE DECIMAL: ± .02 THREE PLACE DECIMAL: ± .005 DECIMAL: ± .005 SEE BACK FOR SIGNOFF SHEET IF APPLICABLE MATERIAL FINISH DO NOT SCALE DRAWING	NAME Louis Cubero	DATE 08/03/2021	 MARIETTA NONDESTRUCTIVE TESTING 530 COMMERCE PARK DRIVE MARIETTA, GA 30060 (770) 528-9000	
	DRAWN CHECKED ENG APPR.	TITLE: <b>160-225C LASER POINTER</b>		
	CAGE NUMBER: 1QPN7 PROPRIETARY AND CONFIDENTIAL THE INFORMATION CONTAINED IN THIS DRAWING IS THE SOLE PROPERTY OF MARIETTA NONDESTRUCTIVE TESTING. ANY REPRODUCTION IN PART OR AS A WHOLE WITHOUT THE WRITTEN PERMISSION OF MARIETTA NONDESTRUCTIVE TESTING IS PROHIBITED.	SIZE <b>B</b>	DWG. NO. <b>160-225CA00</b>	REV
	SCALE: 1:2 WEIGHT: 1b SHEET 1 OF 1			

8 7 6 5 4 3 2 1